

Thesis Journey at MPH, Epidemiology

Enoch Yi-Tung Chen^{1,2}

¹Master's Program in Public Health Sciences Epidemiology (2018-2020)

²Research Assistant at Department of Medical Epidemiology and Biostatistics
Karolinska Institutet

31 August 2020

- ① Story behind my thesis
- ② About my thesis
- ③ What were our thesis topics?
- ④ How did we find thesis topics?
- ⑤ Feasibility vs. Interest

Story behind my thesis

- (Jun 2019) Finished my first year at KI

Story behind my thesis

- (Jun 2019) Finished my first year at KI
- Interested in health economics

Story behind my thesis

- (Jun 2019) Finished my first year at KI
- Interested in health economics
- Got in touch with a former professor of mine

Story behind my thesis

- (Jun 2019) Finished my first year at KI
- Interested in health economics
- Got in touch with a former professor of mine
- (Jul & Aug 2019) Did a summer internship back to Taiwan

Received: 9 July 2015 | Revised: 16 December 2016 | Accepted: 28 February 2017

DOI: 10.1002/hec.3512

RESEARCH ARTICLE

WILEY **Health
Economics**

Estimating lifetime medical costs from censored claims data

Jing-Shiang Hwang¹  | Tsuey-Hwa Hu¹ | Lukas Jyuhn-Hsiarn Lee² | Jung-Der Wang³

Received: 9 July 2015 | Revised: 16 December 2016 | Accepted: 28 February 2017

DOI: 10.1002/hec.3512

RESEARCH ARTICLE

WILEY **Health Economics**

Estimating lifetime medical costs from censored claims data

Jing-Shiang Hwang¹  | Tsuey-Hwa Hu¹ | Lukas Jyuhn-Hsiarn Lee² | Jung-Der Wang³

HWANG ET AL.

WILEY | e335

$W(t)$ beyond the maximum follow-up t_F , we can use a **restricted cubic splines model** to fit the flattened curve of logit $W(t)$ using the whole follow-up period (Andersson, Dickman, Eloranta, Lambe, & Lambert, 2013). The fitted model is then used for the extrapolation of logit $W(t)$ beyond follow-up. The restricted cubic spline function of H knots is defined as

$$q(t) = \beta_{00} + \beta_{01}t + \sum_{h=1}^{H-2} \beta_{h3} \left\{ (t-a_h)_+^3 - \left[(t-a_{H-1})_+^3 (a_H-a_h) - (t-a_H)_+^3 (a_{H-1}-a_h) \right] / (a_H-a_{H-1}) \right\}, \quad (4)$$

Received 19 November 2012,

Accepted 15 July 2013

Published online 23 August 2013 in Wiley Online Library

(wileyonlinelibrary.com) DOI: 10.1002/sim.5943

Estimating the loss in expectation of life due to cancer using flexible parametric survival models

Therese M-L Andersson,^{a*†} Paul W. Dickman,^a Sandra Eloranta,^a
Mats Lambe^{a,b} and Paul C. Lambert^{a,c}

Story behind my thesis

- Asked to do my master's thesis with the team at MEB, KI

Story behind my thesis

- Asked to do my master's thesis with the team at MEB, KI
- (Sep 2019) Accepted as a thesis student at the Biostat group at MEB

Story behind my thesis

- Asked to do my master's thesis with the team at MEB, KI
- (Sep 2019) Accepted as a thesis student at the Biostat group at MEB
- (Sep-Dec 2019) Project plan period (still taking full-time courses)

Story behind my thesis

- Asked to do my master's thesis with the team at MEB, KI
- (Sep 2019) Accepted as a thesis student at the Biostat group at MEB
- (Sep-Dec 2019) Project plan period (still taking full-time courses)
- (Jan-Jun 2020) Thesis period ~~Covid period is not yet done. :(~~

About my thesis

- Title: Extrapolating cancer patient survival: a comparison of the flexible parametric model and the rolling-over algorithm

About my thesis

- Title: Extrapolating cancer patient survival: a comparison of the flexible parametric model and the rolling-over algorithm

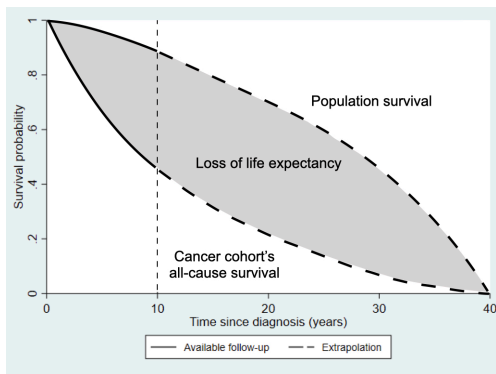


Figure: Graphical illustration of loss of life expectancy

Learning during my thesis period?

- Speed is important. Direction is even more important.

Learning during my thesis period?

- Speed is important. Direction is even more important.
- Peer review. (Those newbies sitting beside you are way too valuable.)

Learning during my thesis period?

- Speed is important. Direction is even more important.
- Peer review. (Those newbies sitting beside you are way too valuable.)
- We are at the place with treasure .

Learning during my thesis period?



Gol.D.Roger said to Monkey D. Luffy,
"My fortune is yours for the taking,
but you'll have to find it first.

I left everything I own in One Piece."

(Figure: <https://kledikun.blogspot.com/2017/12/goldroger-or-monkeydluffy.html>)

What were our thesis topics?



Figure: Thesis topics of MPH class of 2020. Figure credit: Newsletter to master students, Department of Global Public Health, July 2020

How did we find thesis topics?

- Thesis project proposals (sent out by Program director)

How did we find thesis topics?

- Thesis project proposals (sent out by Program director)
- Summer internship → thesis student

How did we find thesis topics?

- Thesis project proposals (sent out by Program director)
- Summer internship → thesis student
- Fieldwork

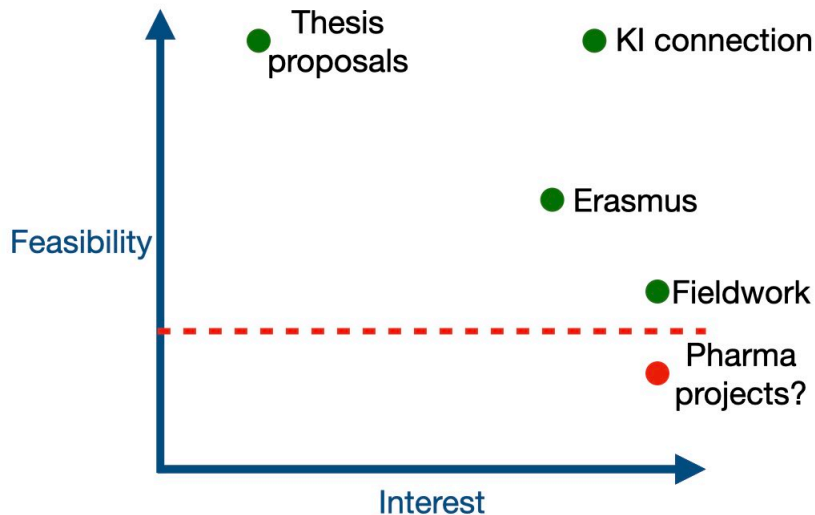
How did we find thesis topics?

- Thesis project proposals (sent out by Program director)
- Summer internship → thesis student
- Fieldwork
- Original connection → KI connection

How did we find thesis topics?

- Thesis project proposals (sent out by Program director)
- Summer internship → thesis student
- Fieldwork
- Original connection → KI connection
- Erasmus

Feasibility vs. Interest



Feasibility vs. Interest

- Feasibility:
 - Need to a PASS to get the diploma

- Interest:

Feasibility vs. Interest

- Feasibility:
 - Need to a PASS to get the diploma
 - Minimum thesis criteria (25 pages, 4 months, defense, no plagiarism)

- Interest:

Feasibility vs. Interest

- Feasibility:
 - Need to a PASS to get the diploma
 - Minimum thesis criteria (25 pages, 4 months, defense, no plagiarism)
 - ~~PhD thesis, Change the entire world~~
- Interest:

Feasibility vs. Interest

- Feasibility:
 - Need to a PASS to get the diploma
 - Minimum thesis criteria (25 pages, 4 months, defense, no plagiarism)
 - ~~PhD thesis, Change the entire world~~
 - ~~Nobel prize (though you are at KI)~~
- Interest:

Feasibility vs. Interest

- Feasibility:
 - Need to a PASS to get the diploma
 - Minimum thesis criteria (25 pages, 4 months, defense, no plagiarism)
 - ~~PhD thesis, Change the entire world~~
 - ~~Nobel prize (though you are at KI)~~
- Interest:
 - You can feel happy when doing your thesis.

You need friends



Figure: <https://www.pinterest.com/pin/450289662716760457/>

Enoch Yi-Tung Chen

enoch.yitung.chen@ki.se

enochytchen.com

Slides available at: <https://enochytchen.com/talk/mphthesis>